

TEXAS GLO PROPOSED STUDIES



CAMERON, HIDALGO, STARR, WILLACY COUNTIES

DECEMBER 9, 2020

TEXAS GLO

“We work to rebuild communities, to put Texans back in their homes, and to help businesses recover after the trauma of disaster.”

GEORGE P. BUSH

Texas General Land Office Commissioner



DECEMBER 9, 2020

GLO-CDR PLANNING MISSION



Mission Statement:

GLO-CDR Planning team designs and oversees planning studies to collect, analyze, and communicate disaster-related data to assist decision makers to better protect Texans from future disasters.

What do decision makers need to make good decisions?

Good data

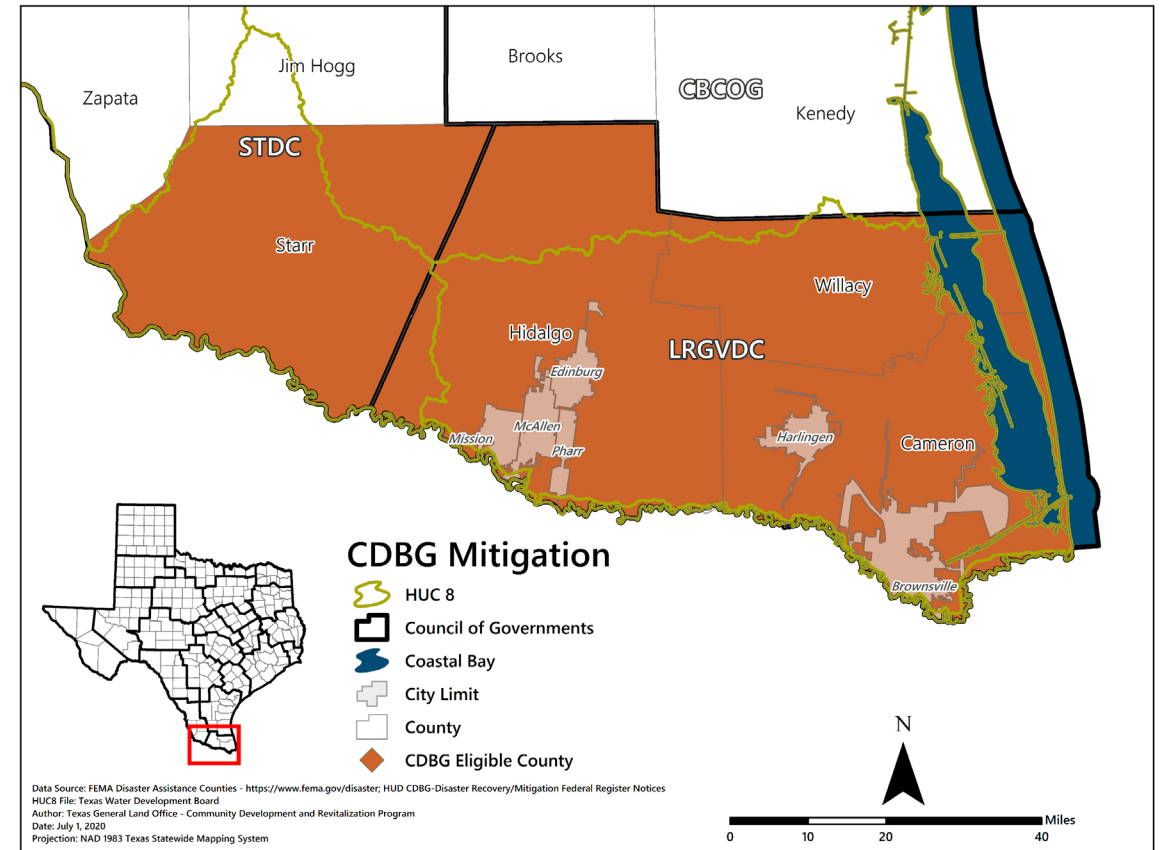
- Evaluate actual risk – data must be accurate and reliable
- Support cost effective mitigation strategies
- Determine funding sources for future projects



LOWER RIO GRANDE VALLEY FLOOD STUDY



- A regional flood study, encompassing Hidalgo, Willacy, Cameron, and Starr Counties, will mirror the ongoing *Flood Studies within Combined River Basins* study.
- This study will evaluate mitigation and abatement strategies to reduce disaster impacts and increase community resiliency.
- Funding - \$10M (2015 Floods & MIT)



WALKABILITY (TRANSPORTATION) STUDY



- Purpose – To study how Mission's population, located in the low tide section of downtown, can walk to shelters during a high rainfall event.
- How do we make people safe during the short-term when a flash flood hits?
- The proposed study could be expanded to surrounding cities (i.e. McAllen, et al) and could serve as a model for smaller towns in the Valley to adopt
- Counties Included – Cameron, Hidalgo, Willacy



ECONOMIC DEVELOPMENT STUDY



OBJECTIVES:

- **Expand economic activities** in the region in order to grow its base of jobs, help its residents prosper, and remain sustainable throughout future economic development.
- **Evaluate the region's existing assets**, key sectors and potential growth sectors, and the job market and job growth opportunities.
- **Diversify the local economy** and help the region thrive while **remaining resilient** to large shocks such as major storms or economic downturns.





Questions?

Contact Shonda Mace at

512.463.5370

Shonda.mace.glo@recovery.texas.gov